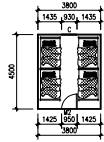
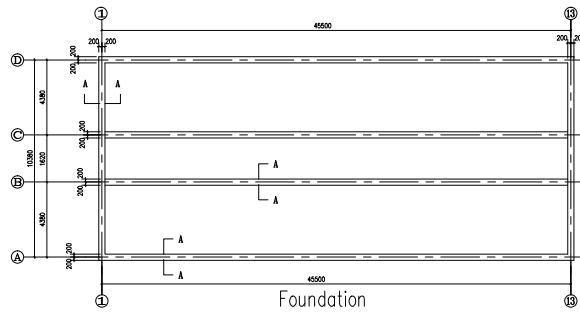
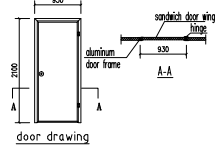


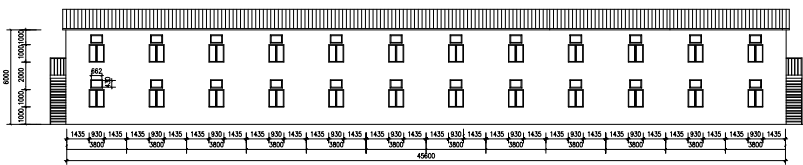
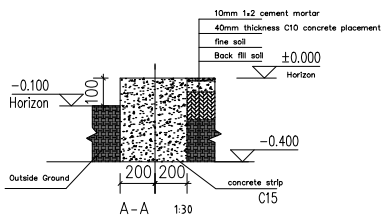
Ground floor and Second floor Plan View



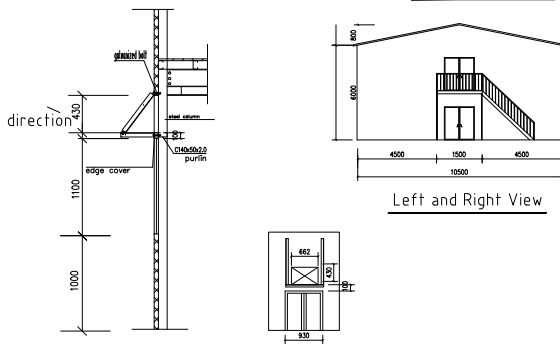
each room 4 persons, there are 48 rooms and 192 persons in total for one two storey labor camp.



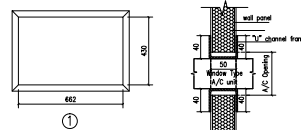
Foundation



Front and Rear View



Left and Right View



LEGEND:-

□ - A/C WINDOW OPENING SIZE 68X45 cm

A/C installation-1 SW. Bracket for the A/C should be offered by the A/C supplier.

